An aerial photograph of a residential neighborhood. A road with a median runs diagonally from the top left towards the center. To the left of the road are green agricultural fields. To the right and below the road is a dense residential area with many houses, some with red roofs, and trees. The overall scene is a mix of urban and rural environments.

# EFRR

NRW WIRD KLIMAROBUST

Transnational workshop series  
Approaches to climate change adaptation  
in rural regions across Europe

## **APPROACHES TO CLIMATE CHANGE ADAPTATION IN RURAL REGIONS ACROSS EUROPE - TRANSNATIONAL WORKSHOP SERIES**

For more than three years, climate adaptation in rural areas has been promoted within the framework of the EU-LIFE project Evolving Regions. In seven regions of the German state of North Rhine-Westphalia, integrated and collaborative climate adaptation processes based on innovative methods have been carried out, enabling regional actors to actively address the challenges posed by climate change.

We share our experiences and invite practitioners from regional and local climate adaptation as well as actors from science to discuss different aspects of climate adaptation with us in three online workshops. You will get to know different approaches from European countries, you will be able to network and you will be able to look at cooperation in municipalities and regions, the role of climate data in dialogue processes as well as process formats of climate adaptation in comparison.

Workshop 1:

**Effective solutions for multilevel  
cooperation of local and regional  
authorities**

# Structure of the documentation:

- Presentation Jürgen Schultze (TU Dortmund):  
**Evolving Regions**
- Presentation Lara García Gimeno  
(Government of the Balearic Islands): **LIFE**  
**AdaptCalaMillor**
- Transcript of the discussion

## **WORKSHOP 1: EFFECTIVE SOLUTIONS FOR MULTILEVEL COOPERATION OF LOCAL AND REGIONAL AUTHORITIES**

The effects of climate change are not only evident in large cities and metropolises; rural areas are also affected by the consequences of the changing climate. However, many smaller municipalities do not have the necessary financial and human resources to actively address the climate change-related challenges. At the same time, climate change impacts do not stop at administrative borders. Cross-border cooperation and the support or coordination of adaptation efforts at the regional level are possible solutions. In Germany, for example, at the level of the districts to which the respective municipalities belong. This approach was also followed in the Evolving Regions project.

## **This workshop was developed and organized as part of the LIFE project Evolving Regions.**

The project Evolving Regions (LIFE Roll-outClimAdapt (LIRCA)) is funded by the EU environmental program LIFE and co-financed by the MUNV NRW.

Evolving Regions is a project of the TU Dortmund in cooperation with eight partner regions in North Rhine-Westphalia and the Netherlands as well as five partner institutions. What unites them is the desire to preserve their regions as a viable and sustainable space. Despite advancing climate change. Evolving Regions wants to make rural regions climate-robust and climate-smart. How does this work? The project is planned for four years. During this time, scientists and local actors develop tailor-made roadmaps for the respective region. In it: various measures that are necessary for sustainable and individually tailored climate protection.

*Contact:*

*Katharina Schrot (TU Dortmund): [katharina.Schrot@tu-dortmund.de](mailto:katharina.Schrot@tu-dortmund.de)*

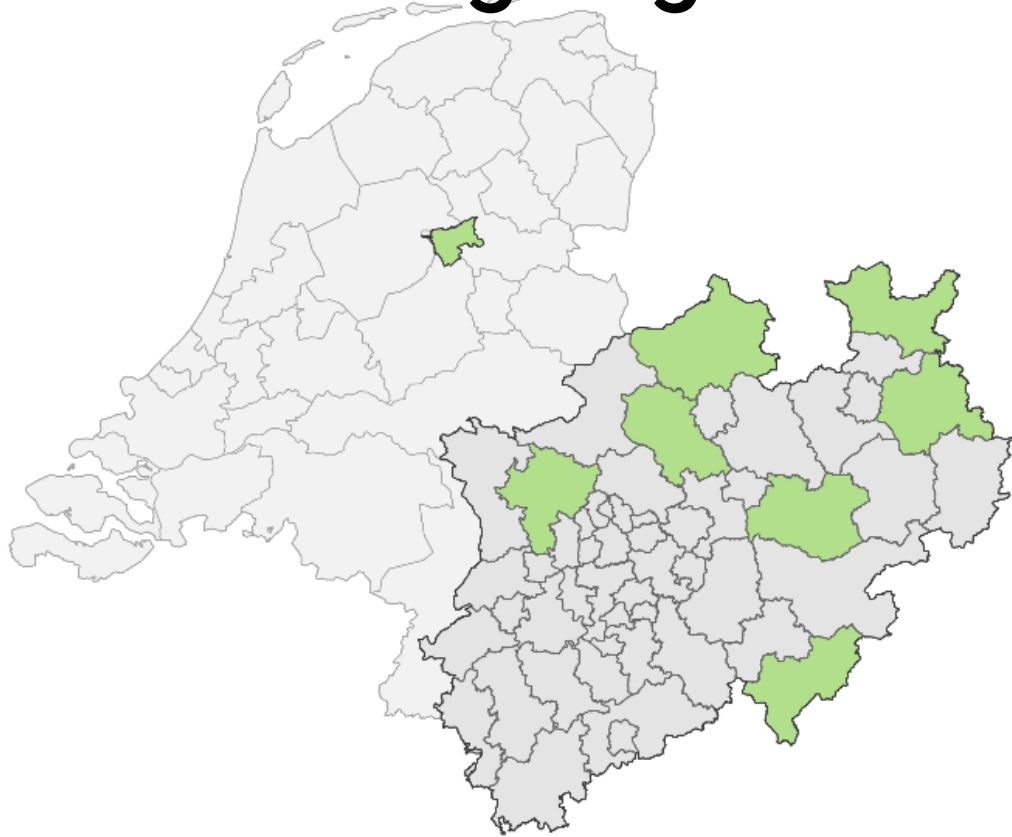
*Jürgen Schultze (TU Dortmund): [jürgen.schultze@tu-dortmund.de](mailto:jürgen.schultze@tu-dortmund.de)*

**Presentation of „Evolving Regions“**

**Jürgen Schultze**

**Social Research Centre / TU Dortmund University**

# Evolving Regions



The project LIFE Roll-outClimAdapt is funded by the EU's LIFE environmental programme and co-financed by MULNV NRW.



Project duration: 01/07/19 – 31/03/23

## Partner regions

- District of Wesel
- District of Siegen-Wittgenstein
- District of Minden-Lübbecke
- District of Lippe
- Gemeente Zwartewaterland and Kampen, NL
- District of Steinfurt
- District of Soest
- District of Coesfeld

## Partner institutions

- TU Dortmund University, Social Research Centre
- TU Dortmund University, Institute for Spatial Planning
- German Institute of Urban Affairs (difu)
- PROGNOS AG
- BEW Bildungszentrum
- University of Twente
- ZDF Digital

NRW- Environment Minister Ursula Heinen-Esser:

*„Evolving Regions is the flagship for climate change adaptation in rural areas for NRW“*





# Evolving Regions: overarching aims

- I. Self-empowerment and capacity building
- II. Integration of adaptation into planning processes
- III. Knowledge Exchange and Rollout

## POLITICAL ANCHORING



### CLARIFYING THE MANDATE

Formulation of the region's goals taking into account the initial situation



### SCOPING

Examination of the initial regional situation and definition of focal points for processing



### FORECASTING

Addressing the expected future and developing a shared vision



### BACKCASTING

Concrete planning of the desired future



### ROADMAP PREPARATION

Preparation of the roadmap as an integrated planning document



### Financing

Investment list  
Fundraising  
Dayly

## STORYTELLING

## INTEGRATION IN EVERYDAY TASKS

## MONITORING

# The Evolving Roadmapping Approach

## POLITICAL ANCHORING



### CLARIFYING THE MANDATE

Formulation of the region's goals taking into account the initial situation



### SCOPING

Examination of the initial regional situation and definition of focal points for processing



### FORECASTING

Addressing the expected future and developing a shared vision



### BACKCASTING

Concrete planning of the desired future



### ROADMAP PREPARATION

Preparation of the roadmap as an integrated planning document



### Financing

Investment list  
Fundraising  
Dayly

## STORYTELLING

## INTEGRATION IN EVERYDAY TASKS

## MONITORING

# The Evolving Roadmapping Approach

## POLITICAL ANCHORING



### CLARIFYING THE MANDATE

Formulation of the region's goals taking into account the initial situation



### SCOPING

Examination of the initial regional situation and definition of focal points for processing



### FORECASTING

Addressing the expected future and developing a shared vision



### BACKCASTING

Concrete planning of the desired future



### ROADMAP PREPARATION

Preparation of the roadmap as an integrated planning document



### Financing

Investment list  
Fundraising

## STORYTELLING

## INTEGRATION IN EVERYDAY TASKS

## MONITORING

Co-productive development of measures

Based on:

- Expertise of the stakeholders
- Jointly defined vision for the region
- Results of the climate impact analysis



Joint process management by moderation and regional partners

Evolving Regions

# The Evolving Roadmapping Approach



Grü

Maßnahme 01:

Entwicklung kreisweit a  
Praxisbeispielen. Ggf. E  
Gebäude- oder Grundst

Einzelmaßnahmen

Notwendige  
Vorbereitungsschritte:

Austauschtreffen zwischen  
Kommunen

Bildung einer  
Redaktionsgruppe

Entwicklung der Leitlinie  
Einigung auf Inhalte

Kooperi

Kooperationsbe  
darf v.a. bei  
blauen  
Infrastrukturen  
Überschneemun  
gen,  
Regenwasser,  
Sensitivierungen  
etc.

Umwend  
The  
auswande  
dika. Pla  
Baufr

Offenti  
art

Einholen politischer  
Mandate / Beschluss als

1 STADT UND DORF  
IM KLIMAWANDEL

Raumnutzung und Planung

- 1.1: Ausarbeitung von Standards zur Aufnahme des Themas Klim in die kommunale Bauleitplanung
- 1.2: Etablierung eines planerischen Austauschs langfristig auch ü vertikale Ebenen des Verwaltungsapparats zur Effizienzsteigerung
- 1.3: Vereinfachung des Erwerbs von Ausgleichs- und Tauschflächen, Beschleunigung von Planungsprozessen
- 1.4: Erstellung interkommunaler Konzepte zur Harmonisierung von Planungsabläufen

Wissenstransfer und Vernetzung

- 1.5: Bereitstellung von Datengrundlagen, Analysen und Basiswissen, Verbreitung von Fachkenntnissen und zur Vereinfachung des Austausches (z.B. Geodatenportale)
- 1.6.1: Schaffung einer gemeinsamen Wissensbasis und Anwendung kommunalen Zusammenhängen anhand eines Leitfadens
- 1.6.2: Schaffung einer gemeinsamen Wissensbasis und Anwendung kommunalen Zusammenhängen anhand eines Werkzeugkatalogs Maßnahmen- und Best-Practice-Beispielen
- 1.7: Information und Hilfestellung für den politischen Entscheidungsträger
- 1.8: Entwicklung einer gemeinsamen Webseite zum Informationsaustausch
- 1.9.1: Stärkung des kommunalen Austausches zur Verbesserung der allgemeinen Kommunikation: Identifizierung und Konkrete Bearbeitungsschnittstellen
- 1.9.2: Stärkung des kommunalen Austausches zur Verbesserung der allgemeinen Kommunikation: Etablierung von Informationsveranstaltungen für Mitarbeiter\*innen der Verwaltungen zur allgemeinen und spezifischer Fachkenntnisse
- 1.10: Verstärkte Einbindung örtlicher Bildungseinrichtungen zur Weiterentwicklung von Bürger\*innen Fachinformationen



- 2.11: Förderung alternativer Nutzungsformen und Flächenentwicklung zur Etablierung stabiler Ökosysteme und zum Artenschutz
- 2.12: Berücksichtigung von Kaltluftschneisen in Planungsprozessen zur Gewährleistung einer guten Luftqualität

- 3.18: Bedarfe und Anforderungen vulnerabler Bevölkerungsgruppen
- 3.19: Übungen



21.10.2022

Evolving Regions | 2. Schlüsselaktorsworkshop Lippe

8

Co-productive  
of mea

Based on:

- Expertise of stakeholder
- Jointly defined vision for the region
- Results of the climate impact analysis

ematic field

3

Joint process management by moderation and regional partners  
Evolving Regions

# Key factors of the approach

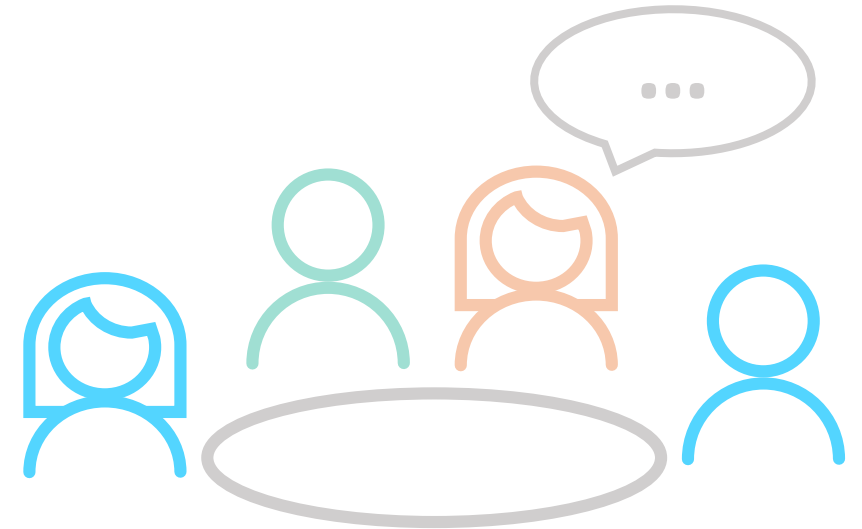
- Involvement of relevant administrative levels and cross-sectoral approach.
- Actors contribute their knowledge, competences and resources to a joint process, joint products and coordinated implementation planning; subsequent efforts and costs are shared.
- Cooperation of actors on an equal basis; joint and parallel analysis and reflection of the challenges.
- Needs, interests, guiding principles, goals and expectations of all regional actors are taken into account.
- Improved cooperation experiences as well as network and collaboration structures in the region.

# Thematic fields worked on in the regions

Region	Themenfelder		
Wesel	<p data-bbox="657 349 1126 578"><b>Adaptation in Landscape areas</b></p> <ul data-bbox="657 621 1095 1235" style="list-style-type: none"> <li data-bbox="657 621 1039 763">• Sustainable land use</li> <li data-bbox="657 806 1095 949">• Forest management</li> <li data-bbox="657 992 1031 1056">• Agriculture</li> <li data-bbox="657 1099 1095 1235">• Water management</li> </ul>	<p data-bbox="1243 349 1712 506"><b>Adaptation in Urban areas</b></p> <ul data-bbox="1243 549 1712 1235" style="list-style-type: none"> <li data-bbox="1243 549 1712 692">• Resilient cities + villages</li> <li data-bbox="1243 735 1681 878">• Settlement development</li> <li data-bbox="1243 921 1681 1235">• Resilient buildings and spatial planning</li> </ul>	<p data-bbox="1829 349 2331 428"><b>Specific Topics</b></p>
Steinfurt			<ul data-bbox="1829 485 2280 628" style="list-style-type: none"> <li data-bbox="1829 485 2280 628">• Healthy living conditions</li> </ul>
Siegen-Wittgenstein			<ul data-bbox="1829 685 2102 742" style="list-style-type: none"> <li data-bbox="1829 685 2102 742">• Tourism</li> </ul>
Soest			<ul data-bbox="1829 813 2216 878" style="list-style-type: none"> <li data-bbox="1829 813 2216 878">• Biodiversity</li> </ul>
Minden-Lübbecke			<ul data-bbox="1829 928 2420 1056" style="list-style-type: none"> <li data-bbox="1829 928 2420 1056">• Education for climate adaptation</li> </ul>
Coesfeld			<ul data-bbox="1829 1106 2267 1228" style="list-style-type: none"> <li data-bbox="1829 1106 2267 1228">• Disaster management</li> </ul>
Lippe			<ul data-bbox="1829 1292 2280 1349" style="list-style-type: none"> <li data-bbox="1829 1292 2280 1349">• Just resilience</li> </ul>

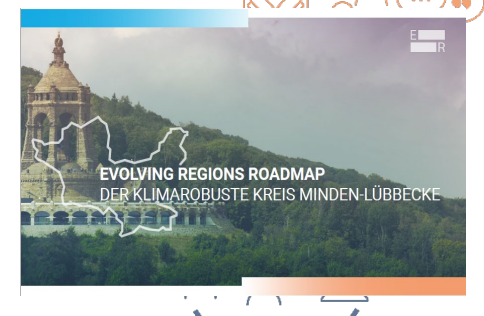
# Participating Actors

- More than 620 stakeholders took part in the workshops.
  - District administrations
  - Towns and municipalities
  - District and local politics
  - NGO´s and associations
  - Businesses, enterprises
  - Research and educational institutions
  - Stakeholders from agriculture, forestry and nature conservation
- Representatives from working and decision-making levels



# Results and Impact

- Integrated climate adaptation roadmaps for all regions
  - Vision, guiding principles, goals
  - Regional climate change vulnerability
  - Collaboratively developed measures
  - Impact assessments and information on monitoring
  - Need for action
- Approx. 25 jointly developed measures per region
  - incl. individual measures/work steps
  - incl. responsibilities, actors to be involved, resource requirements as well as possible drivers and obstacles
- Staff positions for climate adaptation remain in place in all six regions even beyond the project



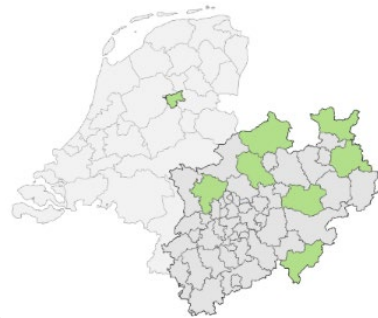
[www.evolvingregions.com](http://www.evolvingregions.com)





# Structure of transfer and mainstreaming activities

## Regional processes



Capacity building in the regions

Consolidation in the regions and permanent staff for climate adaptation

Consultants training and Learning labs

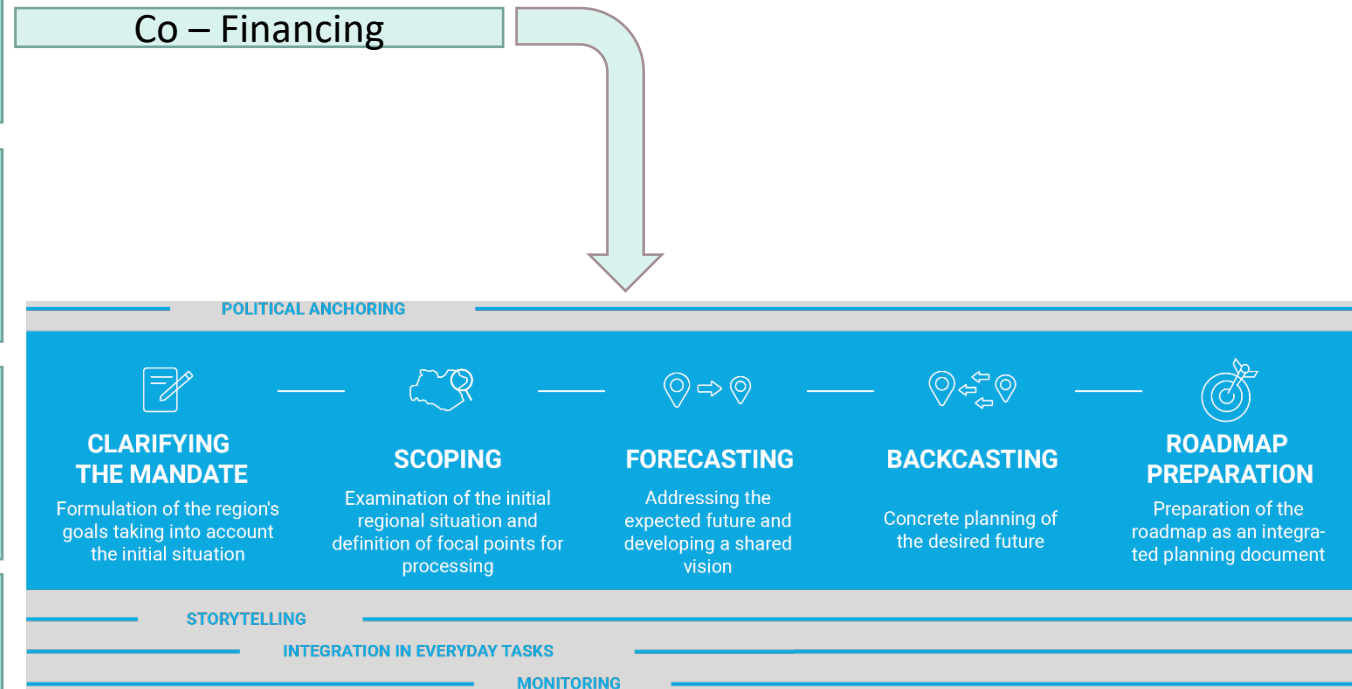
(Inter-)national knowledge exchange

# Government Levels in adaptation

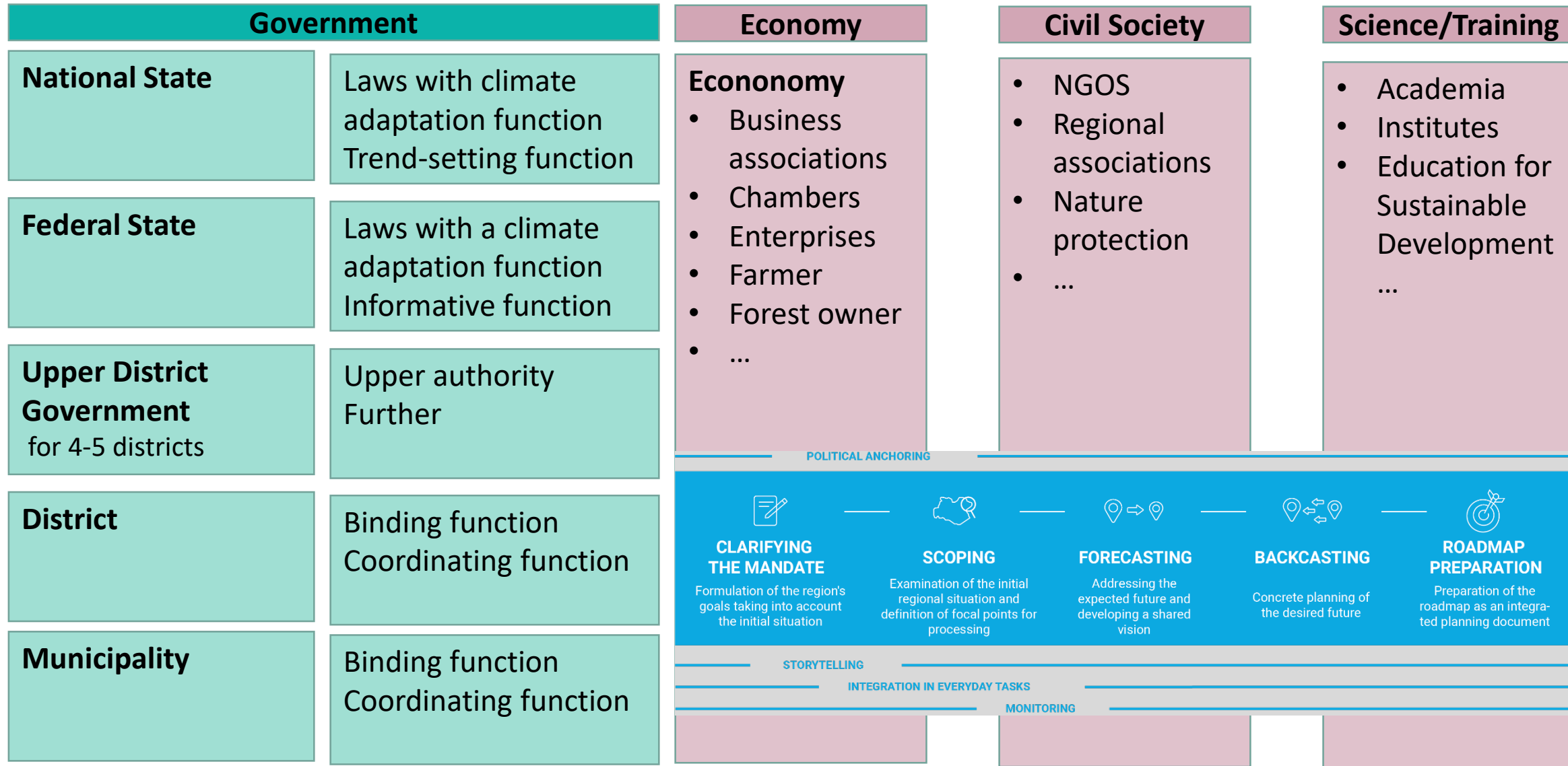
<b>National State</b>	<b>Laws with climate adaptation function:</b> e.g. Nature, ... <b>Trend-setting function:</b> e.g. German Strategy for Adaptation, Action Programms nationwide funding
<b>Federal State</b>	<b>Laws with a climate adaptation function:</b> NRW Climate Adaptation Act <b>Informative function:</b> climate maps, state-wide support programmes
<b>Upper District Government</b> for 4-5 districts	<b>Upper authority:</b> water, nature conservation, technical supervision, regional planning <b>Further:</b> Funding - consultation
<b>District</b>	<b>Binding function:</b> e.g. landscape planning <b>Coordinating function:</b> supra-regional and inter-communal networks, district-wide concepts, regional maps, regional funding, public relations work, etc.
<b>Municipality</b>	<b>Binding function:</b> climate adaptation in urban land use planning, Measures on municipal land/buildings,, municipal funding, <b>Coordinating function:</b> dialogue with citizens, local networks, actors, public relations

# Government Levels in adaptation

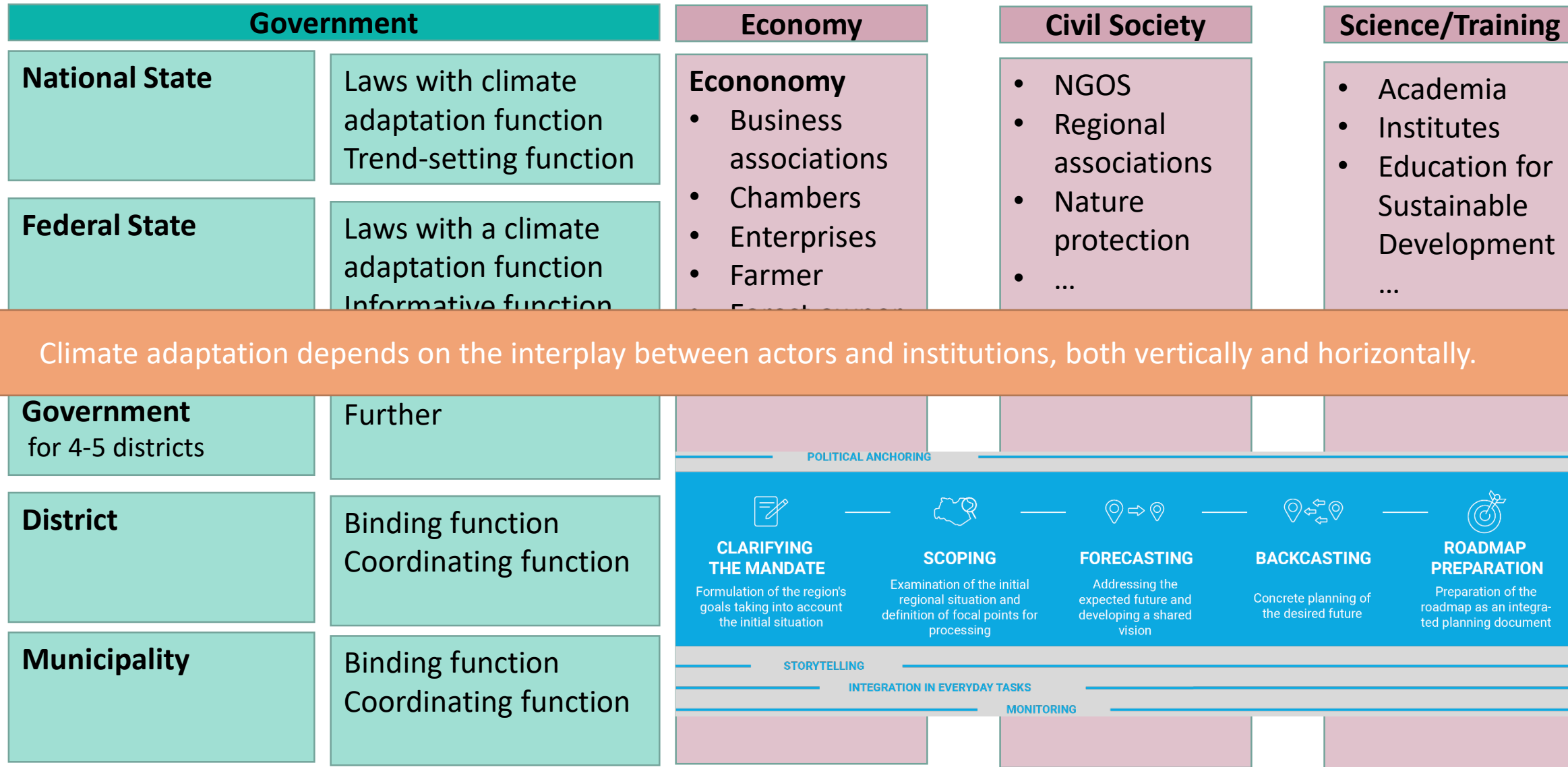
<b>National State</b>	Laws with climate adaptation function Trend-setting function
<b>Federal State</b>	Laws with a climate adaptation function Informative function
<b>Upper District Government for 4-5 districts</b>	Upper authority Further
<b>District</b>	Binding function Coordinating function
<b>Municipality</b>	Binding function Coordinating function



# Governance – more than Government



# Governance – more than Government



**Presentation of  
„LIFE AdaptCalaMillor“  
Lara García Gimeno  
Government of the Balearic Islands**



Project co-financed by the  
European Union  
LIFE21/GIC/ES/101074227

# PROYECTO LIFE AdaptCalaMillor

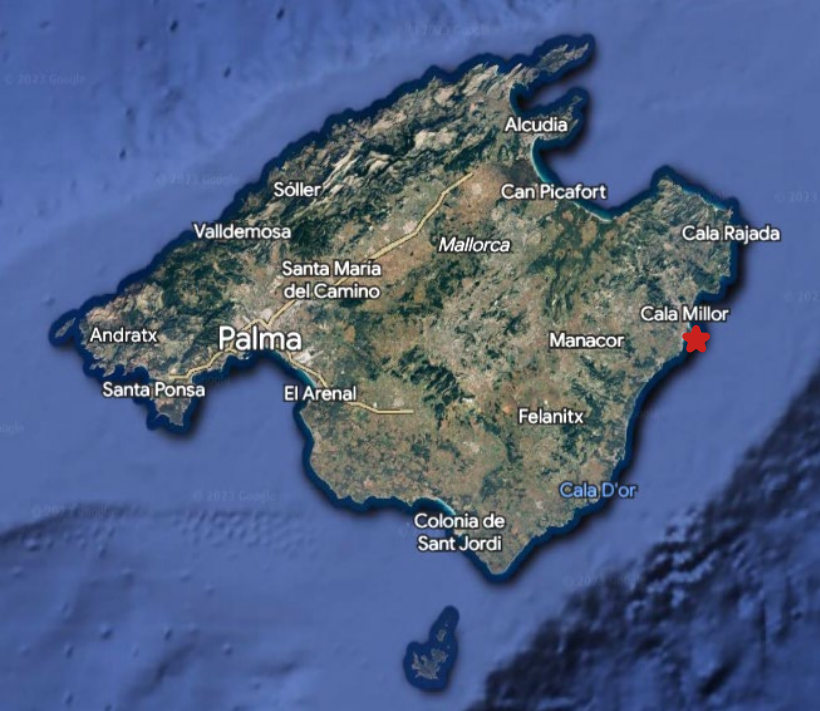
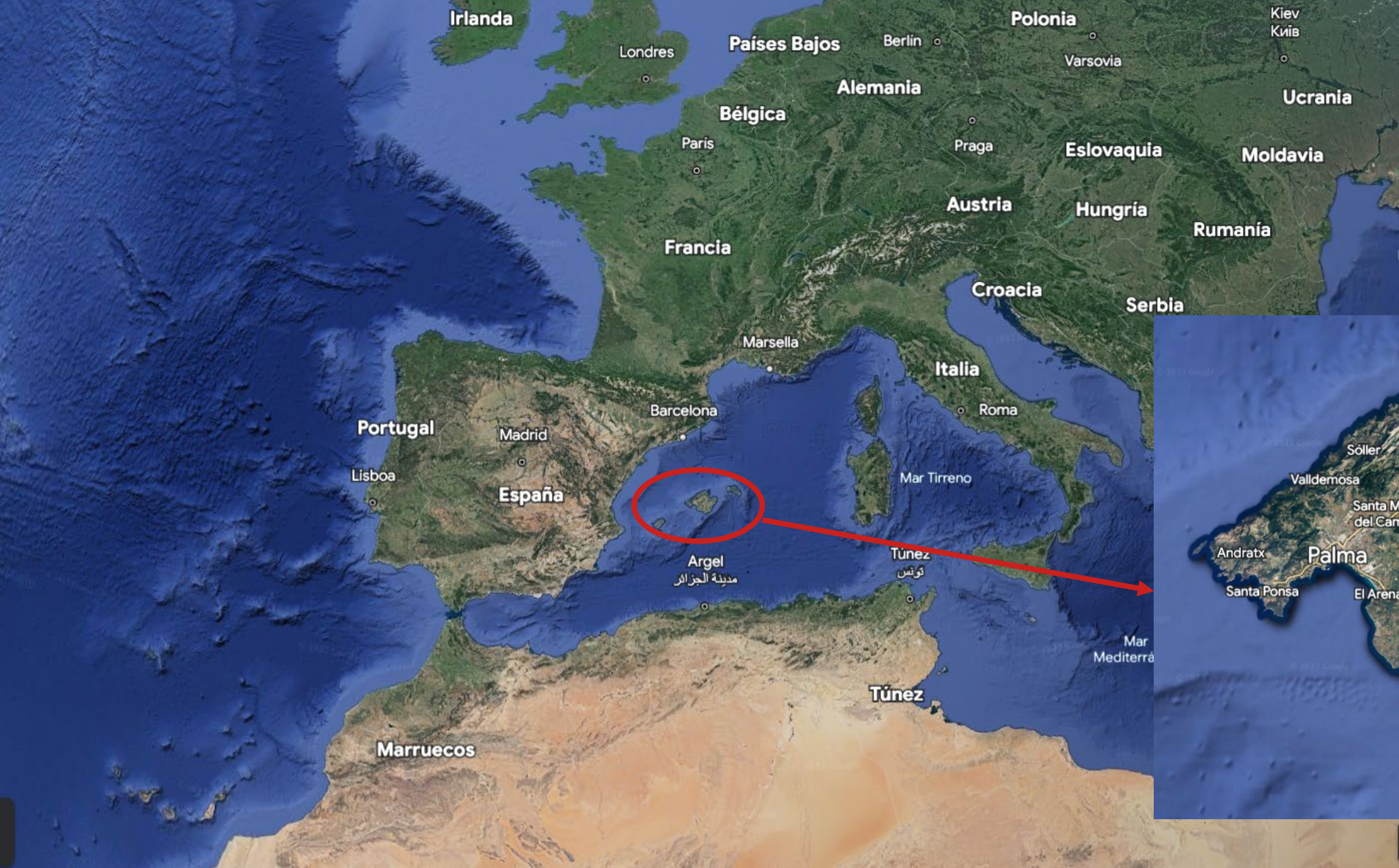
LIFE21 GIC/ES/101074227

Programme for the environment and climate action



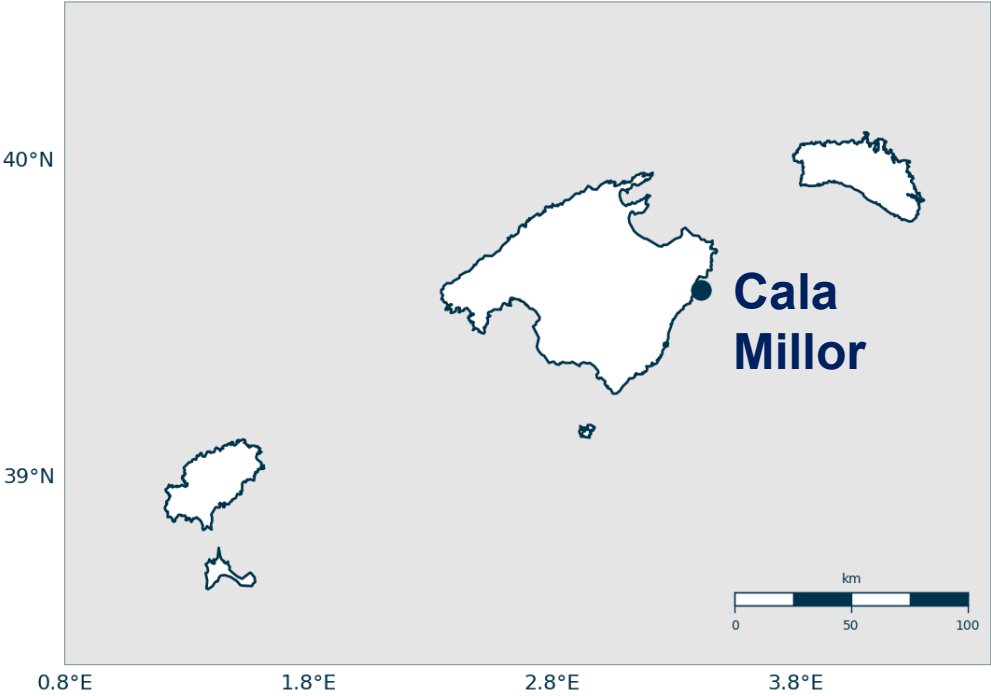
GOVERN  
ILLES  
BALEARSES

# WHERE?





# Cala Millor



# Cala Millor



**Popular “sun and beach” tourist destination**

# Cala Millor



**Sensitive to winter storms and sea level rise**

# Cala Millor



## PUBLIC ADMINISTRATIONS INVOLVED



**Ajuntament de**  
Sant Llorenç des Cardassar



**Ajuntament**  
de Son Servera



**GOVERN**  
ILLES  
BALEARS



# «LIFE AdaptCalaMillor »

## BUDGET:

**Total:** 2.294.046,83 €

**European funding:** 60% (1.376.424 €)

**Post-LIFE budget:** 12 M€

## DURATION:

January 2023 - April 2027

**PARTNERS:** The consortium is made up of partners from the academic and research sector, the economic sector and public authorities



G CONSELLERIA  
O TRANSICIÓ ENERGÈTICA,  
I SECTORS PRODUCTIUS  
B I MEMÒRIA DEMOCRÀTICA  
/ DIRECCIÓ GENERAL  
ENERGIA I CANVI CLIMÀTIC



**Universitat**  
de les Illes Balears

**CONAMA**  
**LANDLAB**



**Ajuntament**  
de Son Servera



**Ajuntament de**  
Sant Llorenç des Cardassar



## OBJECTIVES

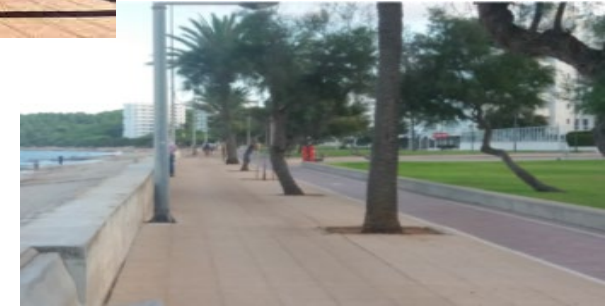
### Nature-Based Solutions

A change in the tourist destination,  
not only on the beach

- ✓ **Identify the effects of climate change:**
  - Preparation of a catalog of possible adaptation strategies in Cala Millor
- ✓ **Increase the involvement of the local population:**
  - Governance dynamics will be applied for the adoption of consensual decisions
- ✓ **Promote the replicability of adaptation strategies**
- ✓ **Serve as a model for implementation along regional, national and international beaches and urban landscapes**

# «LIFE AdaptCalaMillor »

Soft-measures → Nature-based solutions



# «LIFE AdaptCalaMillor »

Promote **adaptation to climate change** in the **long term** in Cala Millor and increase the **resilience** of infrastructures and socio-economics sistem.

Ambitious initiative, which will focus on new **science-based methodologies** and **governance**



**A CHANGE IN THE TOURIST DESTINATION,  
NOT ONLY ON THE BEACH**



**Thank you for your attention!**



GOVERN  
ILLES  
BALEARSES



## Workshop 1

# Effective solutions for multilevel cooperation of local and regional authorities

**Which issues are dealt with locally and which regionally?**

**Which issues should be dealt with locally and regionally?**

Climate  
Adaptation  
depends on  
actions on  
different levels  
and fields

Depends on  
existing  
responsibilities  
and tasks

**What is the added value of an integrated multilevel approach?**

Developing  
measures and  
strategies that  
can be used in  
other places

Direct integration  
into the process can  
lead to synergies  
and prevent  
conflicts from the  
beginning

Shared  
experience

## What drivers and obstacles do you perceive in climate adaptation from a multilevel perspective?

### How do interdependencies, responsibilities, and different framework conditions at the local or regional level contribute to these?

Different interests and goals

Inter-dependencies have to be regarded

Shared visions and goals can foster a process

multipliers are important for a successful climate adaptation and/or mitigation process

Driver:  
Working group with different actors

Overlapping responsibilities and competencies

What was it like in the past? How is it now? How shall it be in X years?

especially those actors who speak for several organization

Obstacle:  
How to reach the actors?

Different actors on vertical and horizontal level

In tourism, this can lead to conflicts:  
How do vacationers imagine their ideal vacation? Often not appropriate for the climate

Signing of shared vision can be crucial but difficult to achieve

# Thank you for your participation and your contributions to the discussion!

 [www.evolvingregions.com](http://www.evolvingregions.com)

 [twitter.com/evolvingregions](https://twitter.com/evolvingregions)



Ministerium für Umwelt,  
Naturschutz und Verkehr  
des Landes Nordrhein-Westfalen



**B·E·W**  
Das Bildungszentrum  
für die Ver- und  
Entsorgungswirtschaft

**KREIS COESFELD**

**lifu**  
Deutsches Institut  
für Urbanistik

**gemeente  
Zwartewaterland**

**IRPUD**

**Kampen**

**KREIS  
SOEST**

**KREIS  
LIPPE**  
Heimat geben. Zukunft geben.

**Mühlenkreis  
MINDEN-LÜBBECKE**

**STADT MOERS**

**prognos**

**Echt vielfältig.**  
Siegen-Wittgenstein  
e.V.

**KREIS  
STEINFURT**

**energieland  
2050 e.v.**  
Wir denken das  
im Kreis Steinfurt!

**tu** technische universität  
dortmund **stis**

**UNIVERSITY  
OF TWENTE.**

**ZDF Digital**

## **WORKSHOP 1: EFFECTIVE SOLUTIONS FOR MULTILEVEL COOPERATION OF LOCAL AND REGIONAL AUTHORITIES**

The effects of climate change are not only evident in large cities and metropolises; rural areas are also affected by the consequences of the changing climate. However, many smaller municipalities do not have the necessary financial and human resources to actively address the climate change-related challenges. At the same time, climate change impacts do not stop at administrative borders. Cross-border cooperation and the support or coordination of adaptation efforts at the regional level are possible solutions. In Germany, for example, at the level of the districts to which the respective municipalities belong. This approach was also followed in the Evolving Regions project.

## **WORKSHOP 2: DATA FOR CLIMATE ADAPTATION: PROCESSING FOR THE APPLICABILITY IN DIALOGUE PROCESSES AND THE USE IN PRACTICE**

Data and modelling play an important role in climate change adaptation. Only those who know where particularly impacted areas are located or how the local climate will develop in the future can implement targeted measures. However, knowledge about climate change impacts and the associated data alone are not sufficient as a basis for municipal decision-making and action. The data must be able to be understood, interpreted and analysed by relevant groups of actors.

## **This workshop was developed and organized as part of the LIFE project Evolving Regions.**

The project Evolving Regions (LIFE Roll-outClimAdapt (LIRCA)) is funded by the EU environmental program LIFE and co-financed by the MUNV NRW.

Evolving Regions is a project of the TU Dortmund in cooperation with eight partner regions in North Rhine-Westphalia and the Netherlands as well as five partner institutions. What unites them is the desire to preserve their regions as a viable and sustainable space. Despite advancing climate change. Evolving Regions wants to make rural regions climate-robust and climate-smart. How does this work? The project is planned for four years. During this time, scientists and local actors develop tailor-made roadmaps for the respective region. In it: various measures that are necessary for sustainable and individually tailored climate protection.